

SUCCESSFUL DEDICATED LOCATOR PROJECTS

MAKING A LIST AND CHECKING IT TWICE!



Marco Dator, Dedicated Locator Supervisor



Safeguard Against Downtime

What is Dedicated Locator?

It refers to a single locate service provider used to mark all underground infrastructure within a project area, which can bring significant advantages to large-scale and long-term excavation projects.

Benefits of DL:

- Improve productivity
- Reduce Downtime
- Prevent Damage & Promote Safer Excavation
- Gain more control



DL Project Submission Review

Understanding each stakeholder's legal requirements

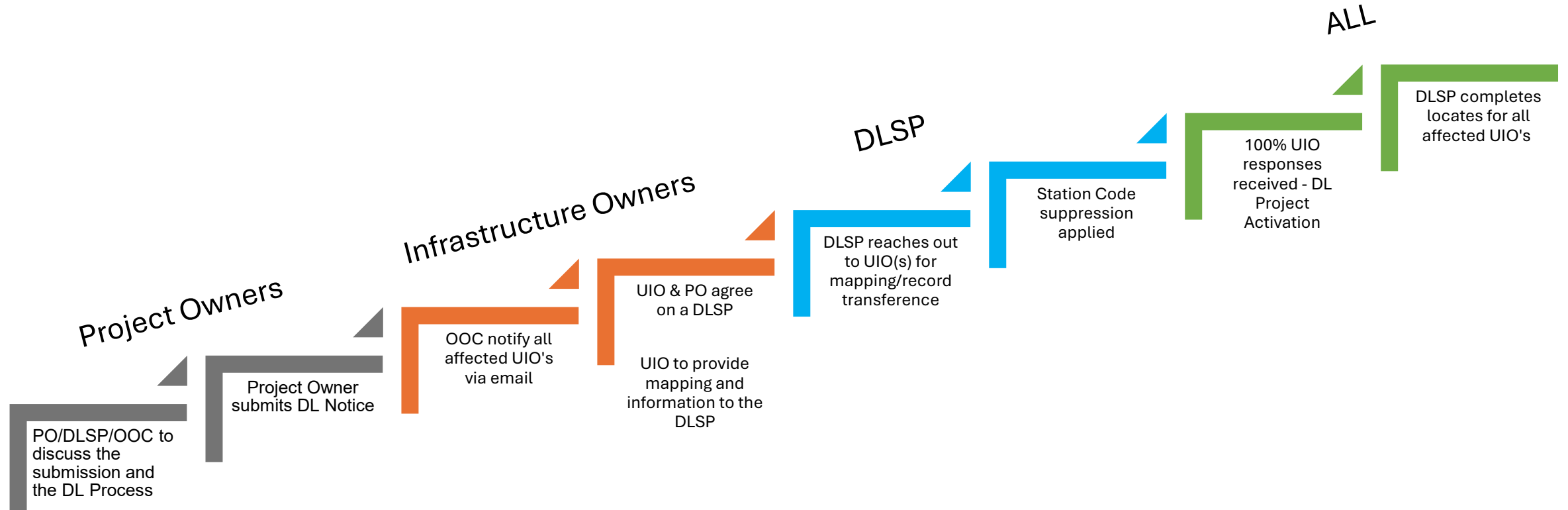
Identify challenges and solutions

Timeframe awareness

Stay compliant



DL 90 Day Notice Milestones



Project Owner

DL Program Checklist

Define Map of
the project
scope

Identify
internal &
external
resource

Set
preliminary
conversations
- OOC, DLSP,
UIOs

Full project
scope
information

Identify costs
involved

DLSP
assessment,
requirements
and training

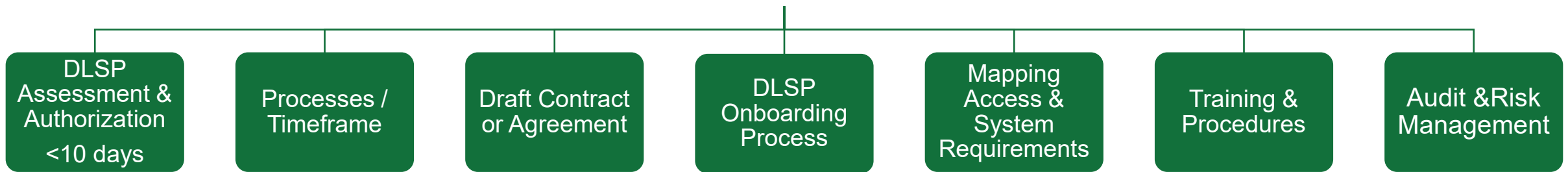
Projected
timeframe
forecast

Project
Tracker - track
progress



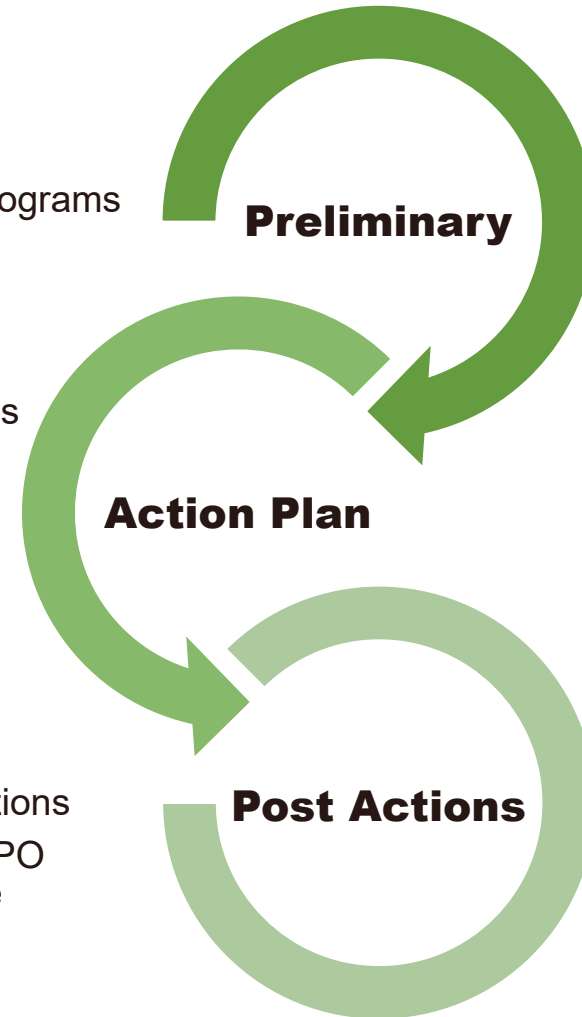
INFRASTRUCTURE OWNERS

Steps to consider in a DL Response Checklist



DLSP CHECKLIST

- ✓ Meets DLSP Framework
- ✓ Assess locate capabilities
- ✓ Review training / competency programs
- ✓ Engage with Project Owners
- ✓ Address gaps
- ✓ Start the conversations with UIOs

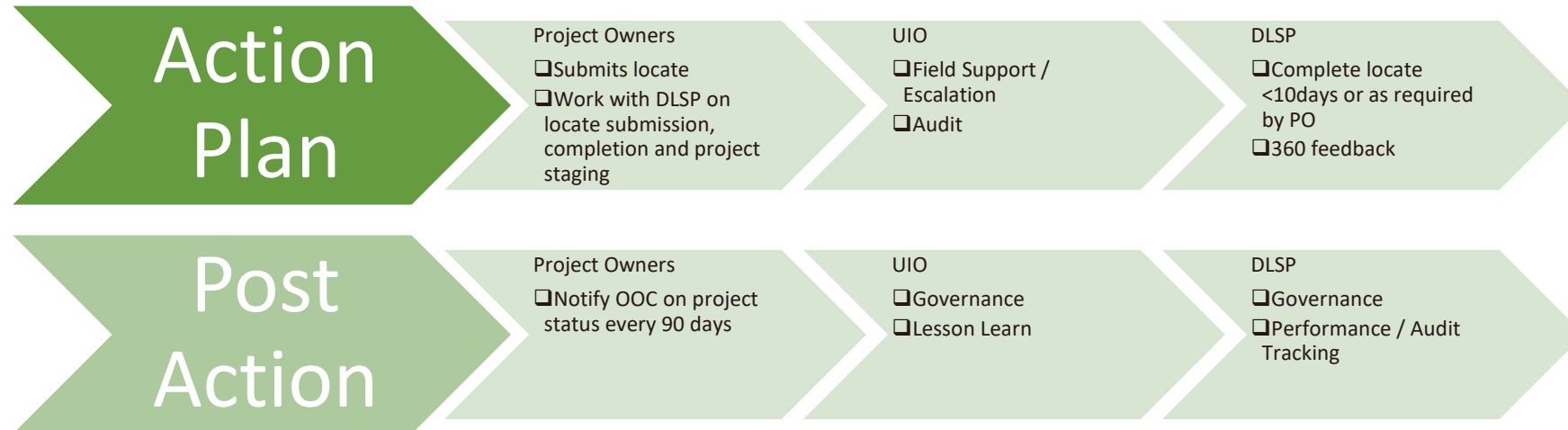


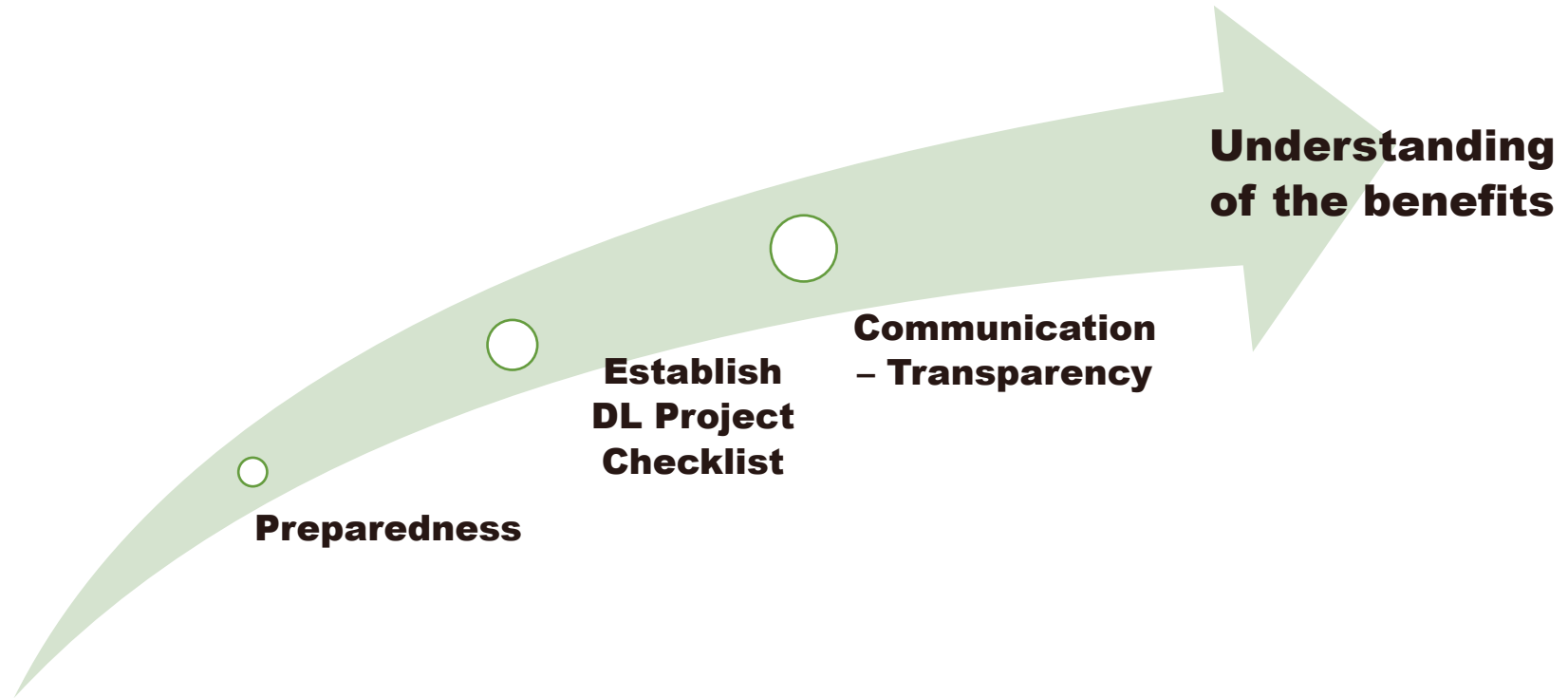
- ✓ QA
- ✓ Lessons Learned – expand relations
- ✓ Proactive locate – working with PO and/or UIOs within project scope

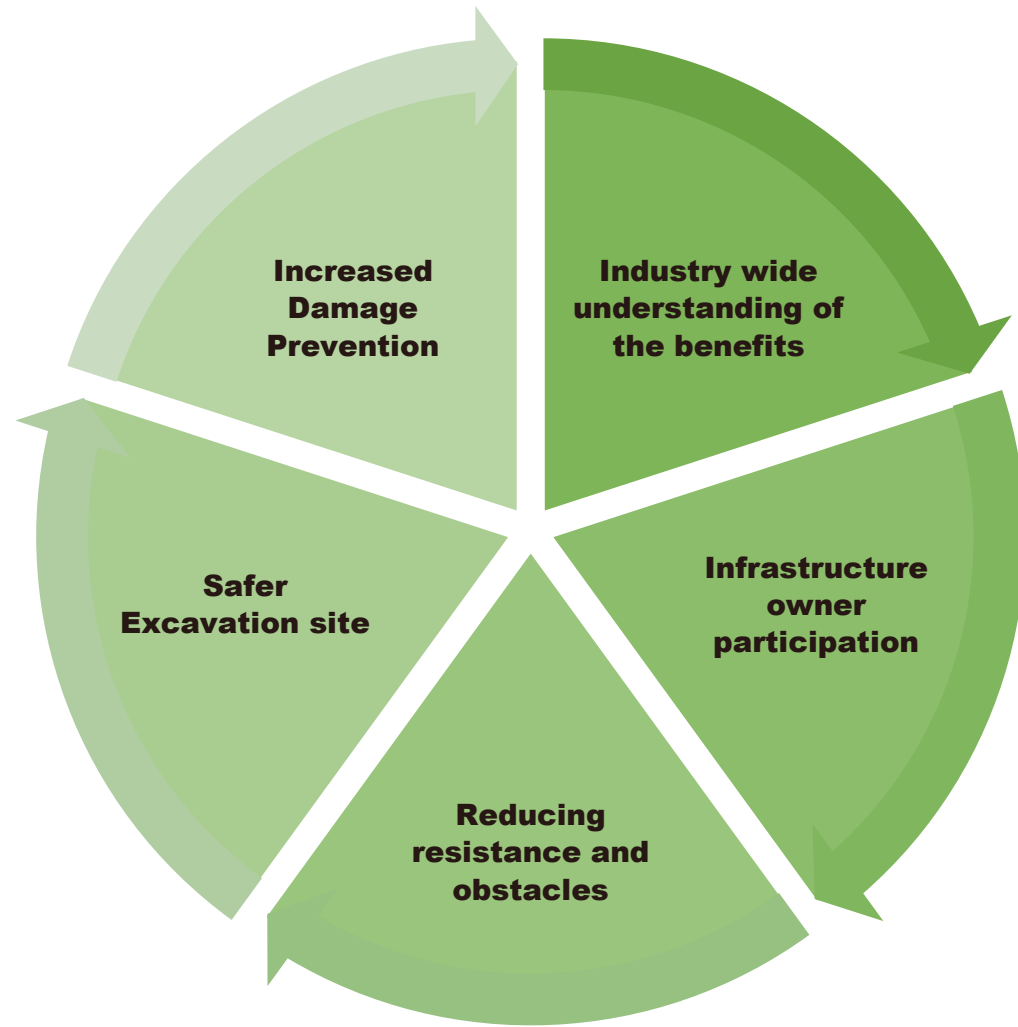
- ✓ PO submit DL Project Notice to initiating DL Process
- ✓ Communicate with the affected UIOs
- ✓ Identify UIOs DLSP assessment, training, onboarding
- ✓ Open line communication with contractors, PO, and UIOs – Completion of locates



SUCCESS – DL Project active







DL IMPACT



“The transition to the Dedicated Locator Program proved to be a game-changer, significantly reducing the wait time for locates from over 30 days to just 5 days.”

“This approach not only smoothed the workflow but also guaranteed that projects advanced without the setbacks of prolonged waiting periods.”

“This efficiency boost has been instrumental in maintaining the momentum of project workflows and avoiding costly delays.”

“The program fosters a collaborative environment where Dedicated Locator Service Providers and Excavators work closely, ensuring safer excavation”

“The Dedicated Locator program has been a significant advancement for the locate industry, enhancing the efficiency of locate delivery timelines”





Questions?

DL@OntarioOneCall.ca

